



26, Great Western House Gas Ferry Road, Bristol, BS1 6GN

£350,000

A superb split level, top floor apartment situated in this modern purpose built development next to Brunel's iconic SS Great Britain with sweeping views of the characterful Bristol Harbourside.

- Top Floor Split Level Apartment
- Modern Purpose Built Development
- Harbourside Views
- Two Double Bedrooms
- Allocated Parking Behind Secure Gates
- Open Plan Living
- Balcony
- Lift Access
- En Suite
- No Onward's Chain

#### The Property

This purpose built development sits on the historic site of Brunel's original steamworks and is nestled alongside the present site of the SS Great Britain.

Split over 2 floors, this light filled apartment offers modern, stylish living in the heart of Bristol's famous Harbourside.

Taking full advantage of an enclosed double glazed, 'inverted bay' balcony which provides a perfect place to enjoy the fine harbourside views, whilst flooding the open plan living space with natural light.

The kitchen consists of a range of wall and base units, stainless steel sink, electric hob, oven, extractor hood, integrated fridge freezer and plumbing for washing machine

The good sized second double bedroom is located on the lower level as is a modern, partly tiled, family bathroom with mains fed shower over bath, basin, low level WC, large fitted mirror and heated towel rail.

The stairs take you up to the master suite which provides a spacious double bedroom area, built in wardrobe with plenty of dressing space as well as an en suite shower room.

Further benefits include lift access as well as a secure allocated parking space and bicycle storage facility.

#### Location

Ideally situated on Spike Island, a scenic quarter of the waterfront which is a stone's throw away from Bristol's best shops, cafes, bars, restaurants and nightlife. This property offers convenient access to Whapping Wharf, Bristol Temple Meads Station, Broadmead and Cabot Circus shopping centre. This split level apartment represents a fantastic opportunity for both owner-occupiers and buy-to-let investors.

Once a busy dock where sailors and merchants would trade goods and set sail for voyages of discovery, Bristol's Harbourside has undergone a huge transformation and is now an attractive, modern development with excellent amenities and access to the rest of the City. The area is alive with the buzz of Sunday markets, waterside restaurants and bars and a whole host of sports and activities including yachting, paddle boarding, and rowing. Millennium Square acts as a central hub, with its fountains and big screen as well as world class attractions such as Brunel's SS Great Britain, We The Curious, Bristol Aquarium, the Amolfini, Spike Island, the Watershed and the M Shed.

#### Other Information

Leasehold: 133 years remaining

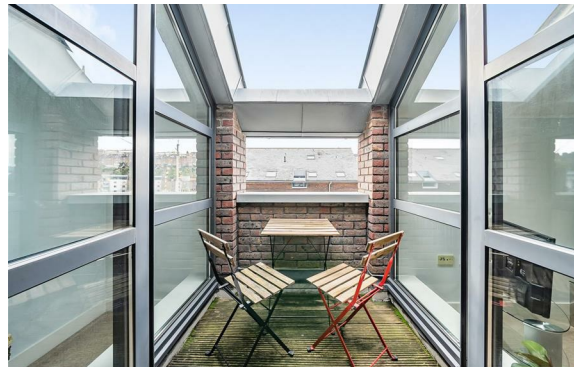
Ground rent: £150 pa

Service charges: £2,280 pa

Council Tax Band: D

#### Please Note

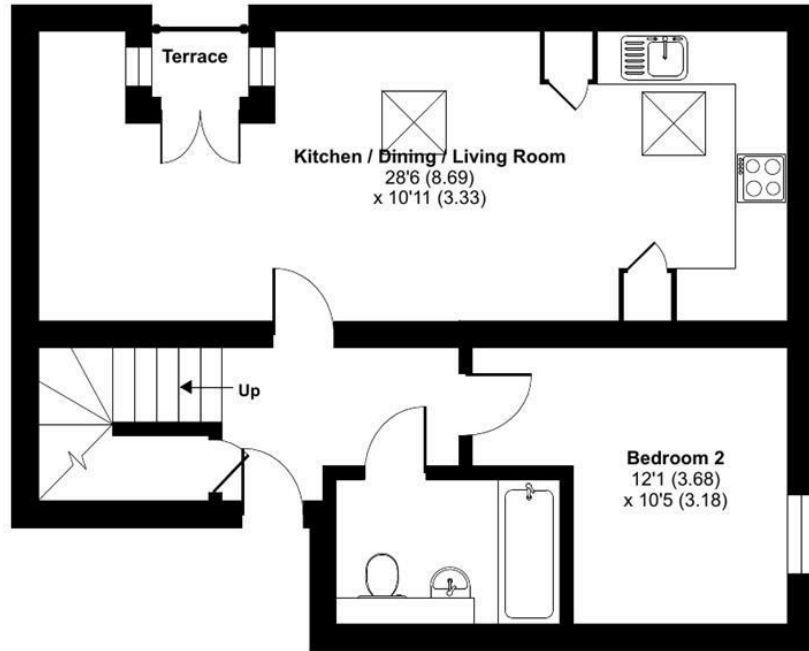
Hollis Morgan endeavour to make our sales details clear, accurate and reliable in line with the Consumer Protection from Unfair Trading Regulations 2008 but they should not be relied on as statements or representations of fact and they do not constitute any part of an offer or contract. All Hollis Morgan references to planning, tenants, boundaries, potential development, tenure etc is to be superseded by the information provided in your solicitors enquiries. It should not be assumed that this property has all the necessary Planning, Building Regulation or other consents. Any services, appliances and heating system(s) listed may not have been checked or tested and you should rely on your own investigations. The seller does not make any representation or give any warranty in relation to the property and we have no authority to do so on behalf of the seller. Please note that in some instances the photographs may have been taken using a wide angle lens.



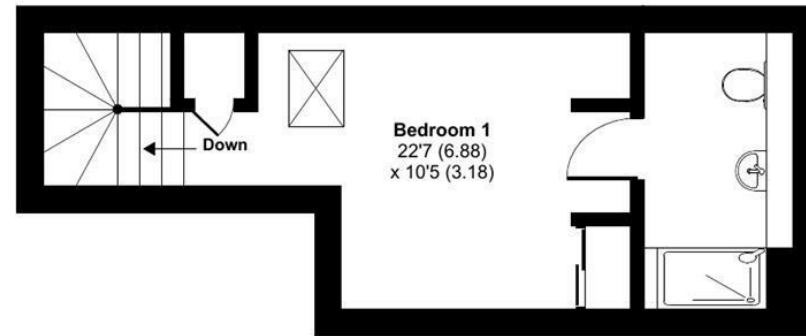
# Great Western House, Gas Ferry Road, Bristol, BS1

Approximate Area = 811 sq ft / 75.3 sq m

For identification only - Not to scale



GROUND FLOOR



FIRST FLOOR



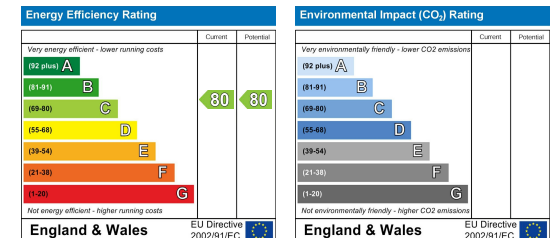
Floor plan produced in accordance with RICS Property Measurement Standards incorporating International Property Measurement Standards (IPMS2 Residential). © nchecon 2024. Produced for Hollis Morgan. REF: 1103813



TEL | 0117 933 9522 | 9 Waterloo Street, Clifton, Bristol BS8 4BT

[www.hollismorgan.co.uk](http://www.hollismorgan.co.uk) | [post@hollismorgan.co.uk](mailto:post@hollismorgan.co.uk)

Hollis Morgan Property Limited, registered in England, registered no 7275716  
Registered address, 5 Upper Belgrave Road, Clifton, Bristol BS8 2XQ



hollis  
morgan

---